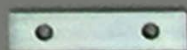


# INSTRUCTIONS FOR INSTALATION AND USE

**ST44M2V4P** - a dual axis sun tracker





8 pcs



2 pcs



16 pcs



4 pcs



2 pcs



1 pcs



2 pcs



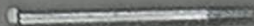
1 pcs



1 pcs



8 pcs



5 pcs M8 x 110mm



4 pcs M8 x 80mm



4 pcs M8 x 50mm



2 pcs M12 x 90mm



6 pcs M8 x 30mm



1 pcs M10 x 50mm



8 pcs M8 x 16mm



24 pcs M6 x 12mm



8 pcs M12 x 20mm



4 pcs M8 x 40mm



4 pcs M8 x 30mm



4 pcs M12



46 pcs M8



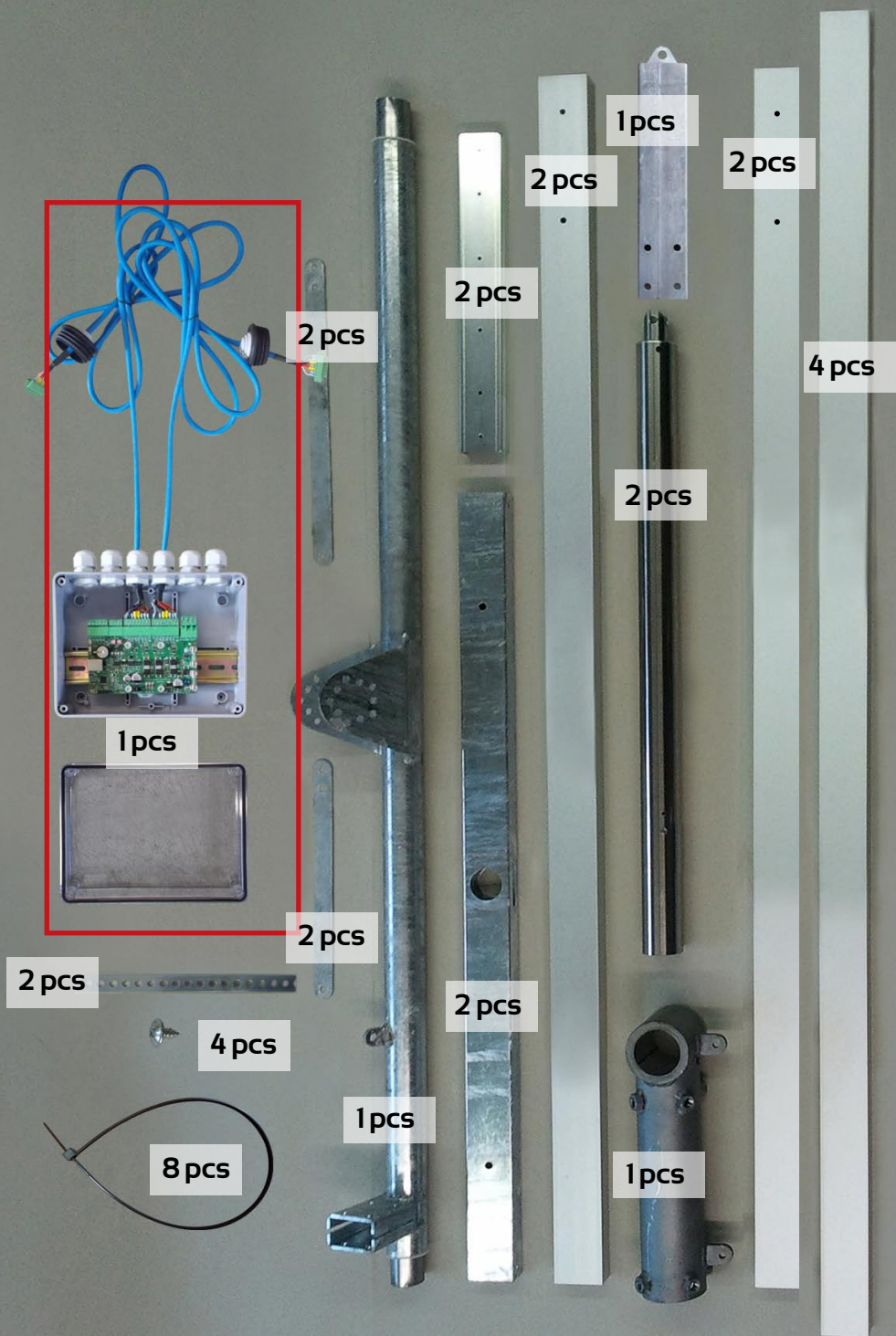
2 pcs M12

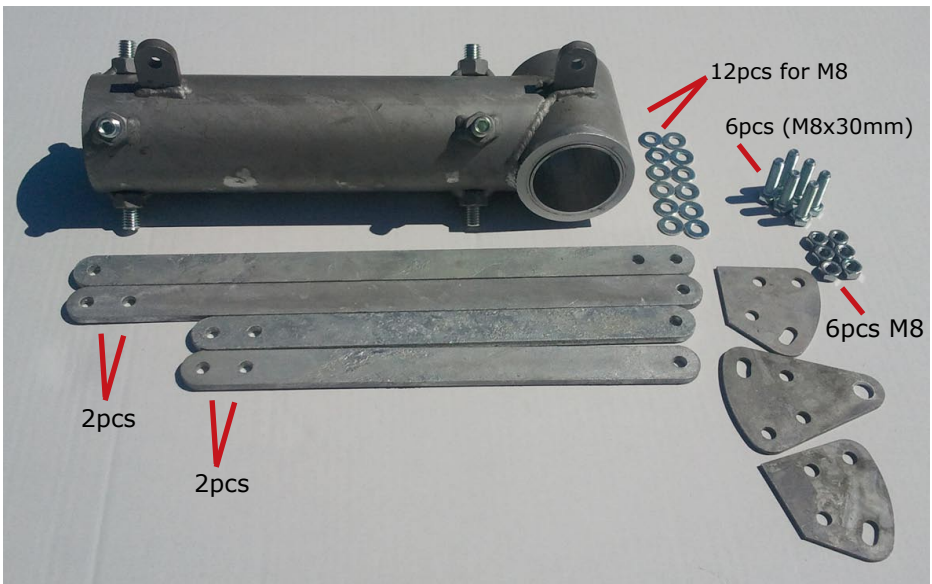
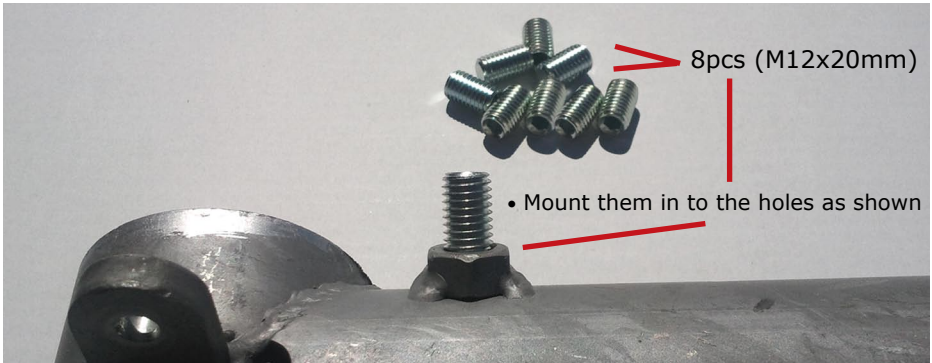


45 pcs M8

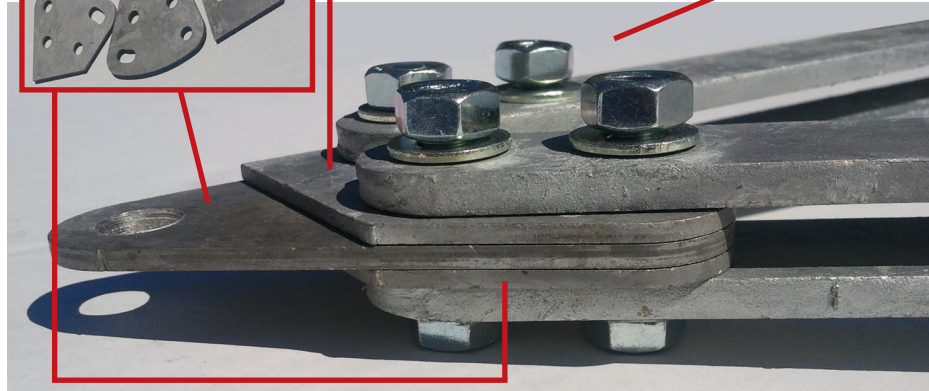
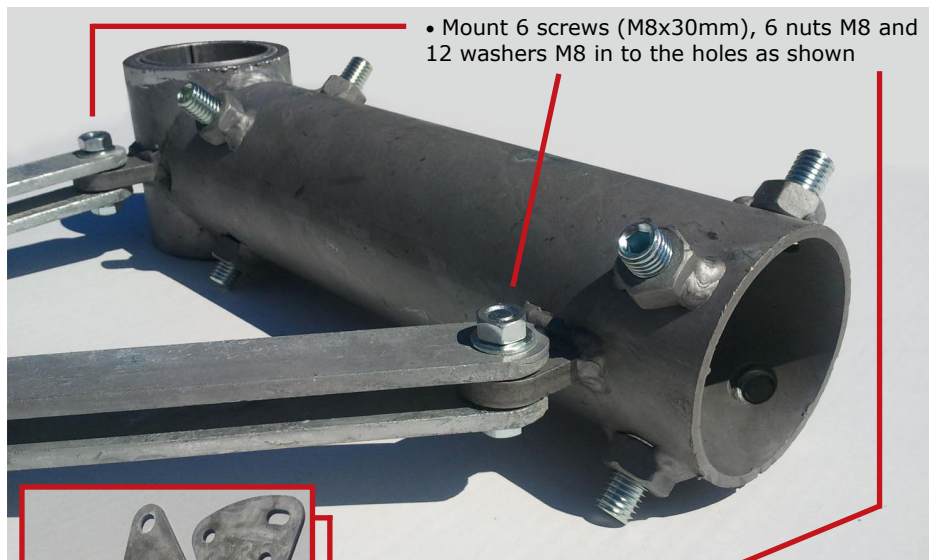


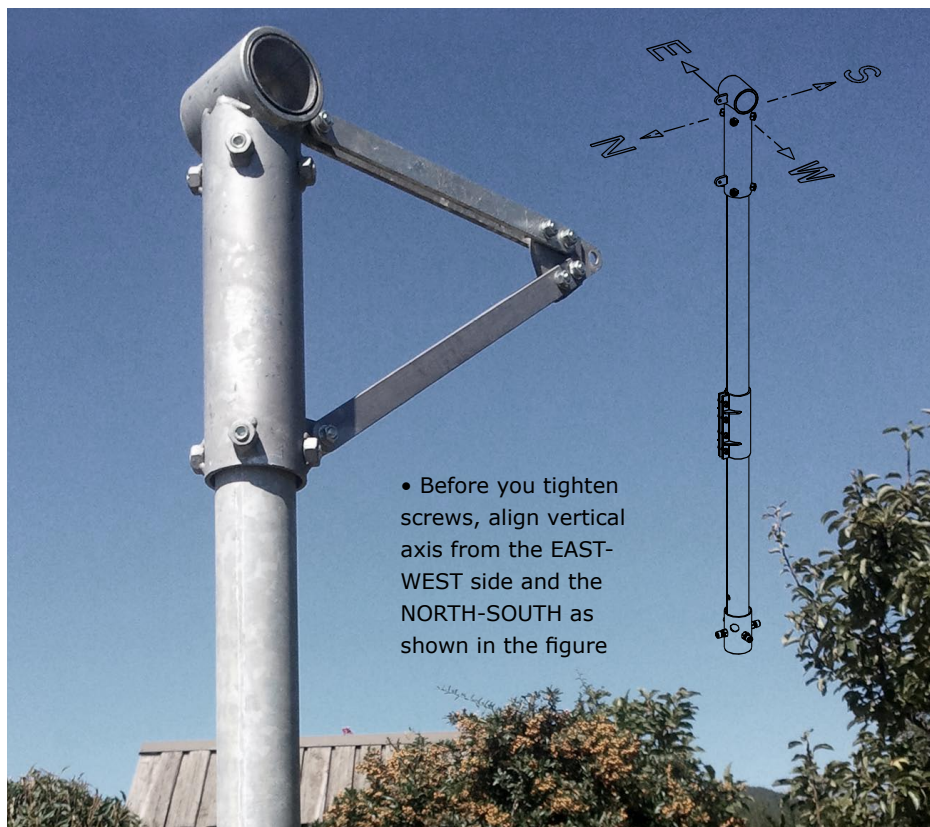
3 pcs Ø7mm

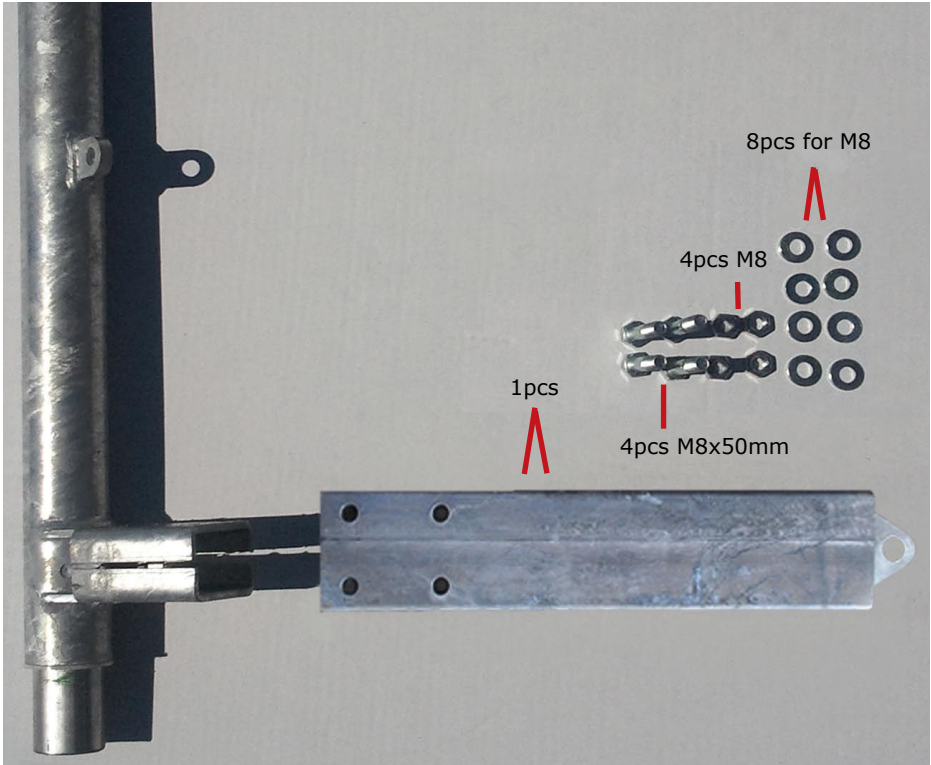




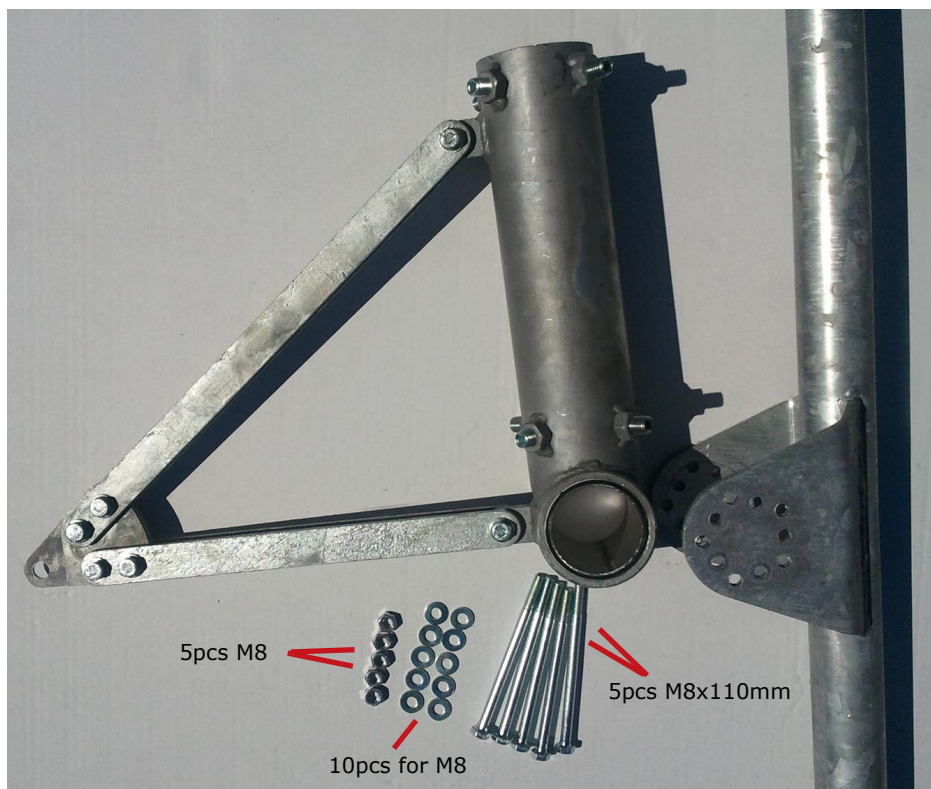




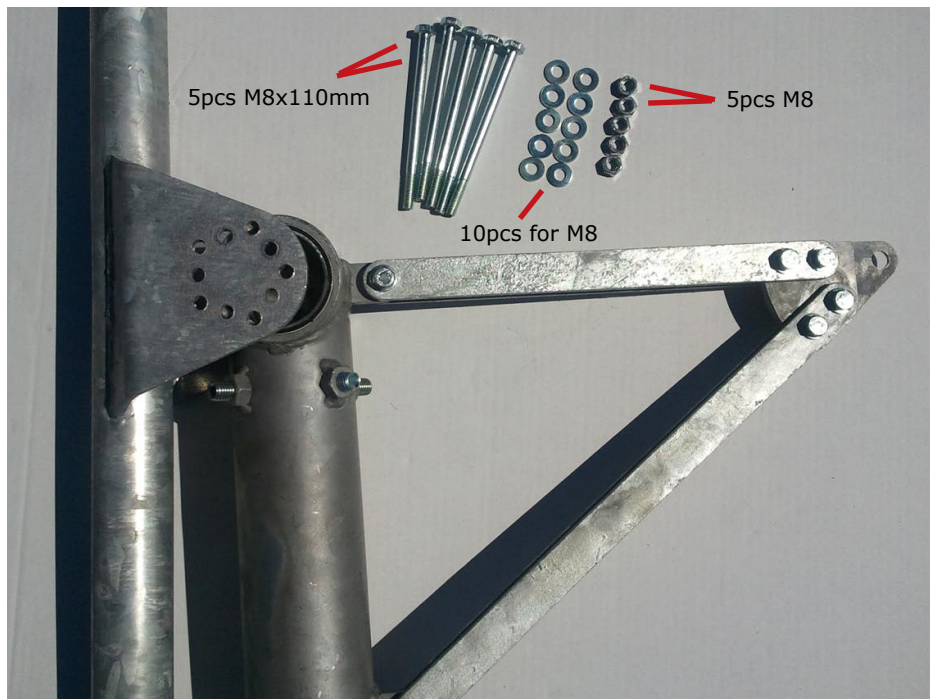


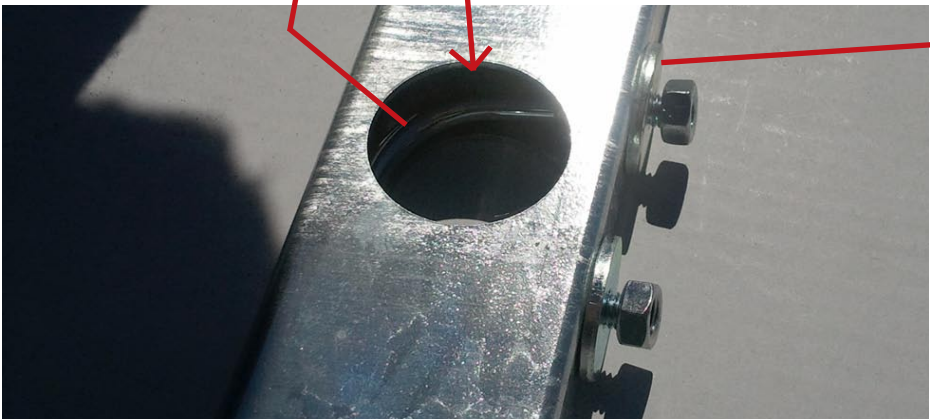
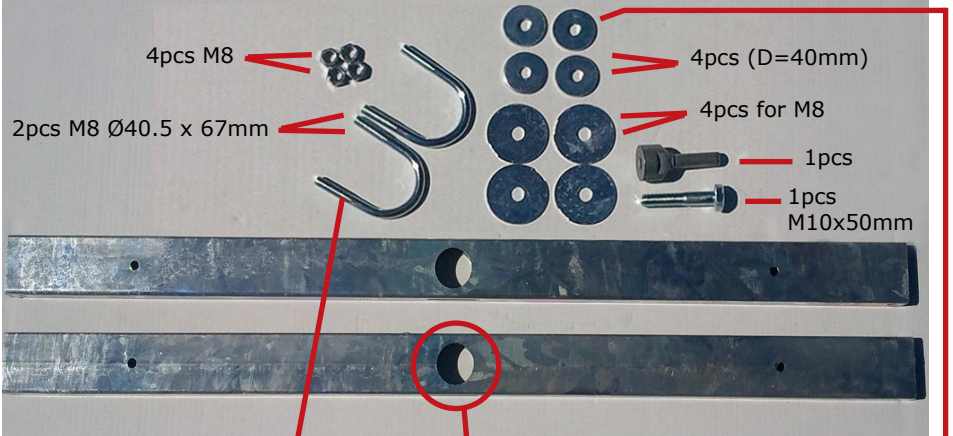




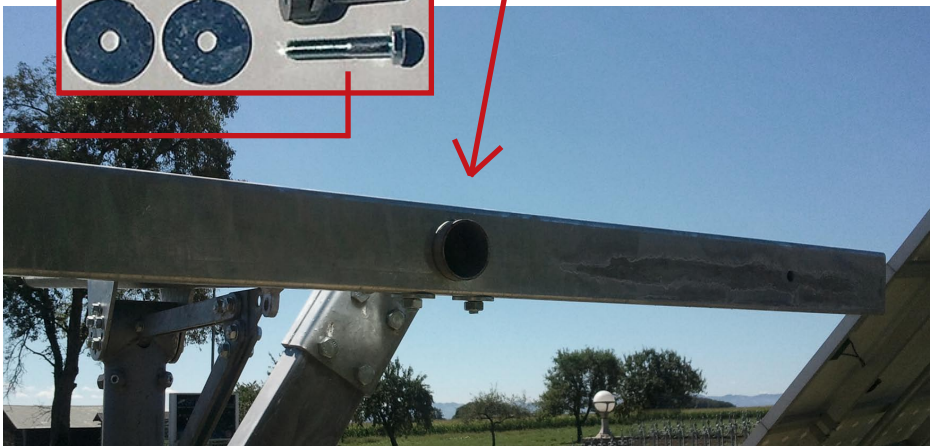
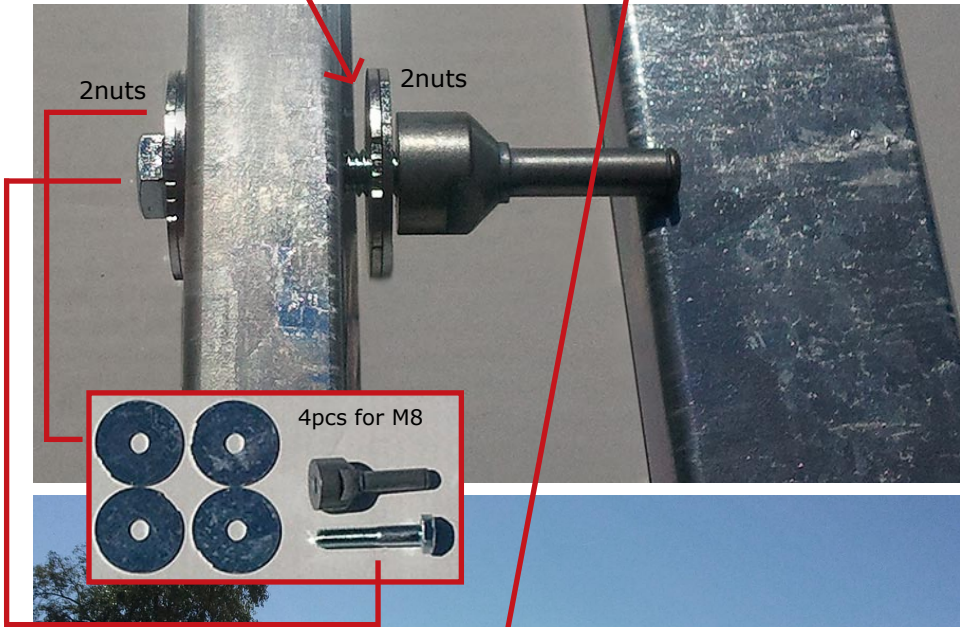
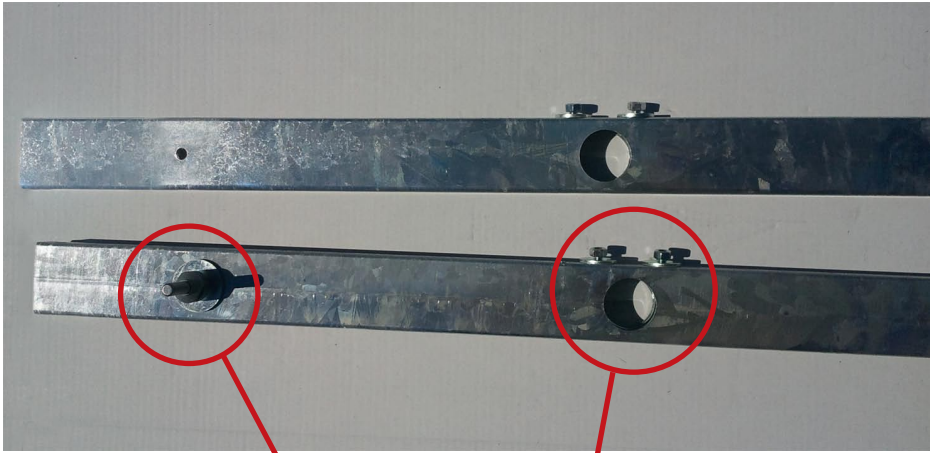










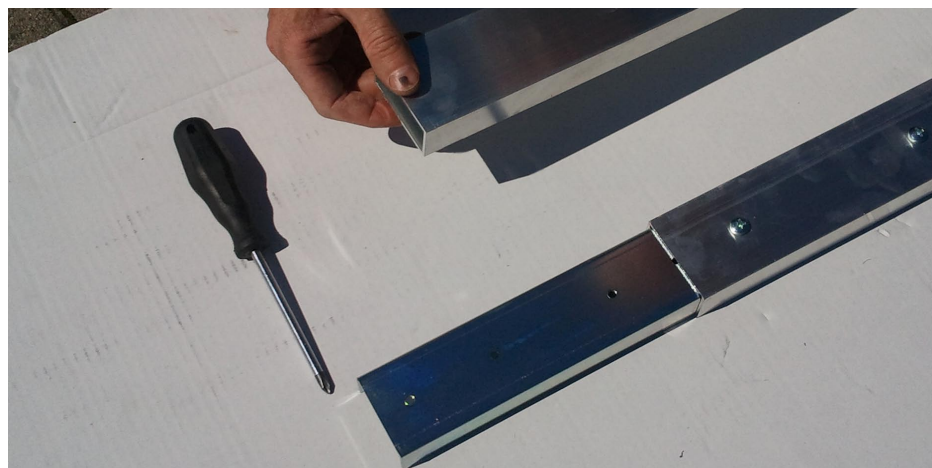
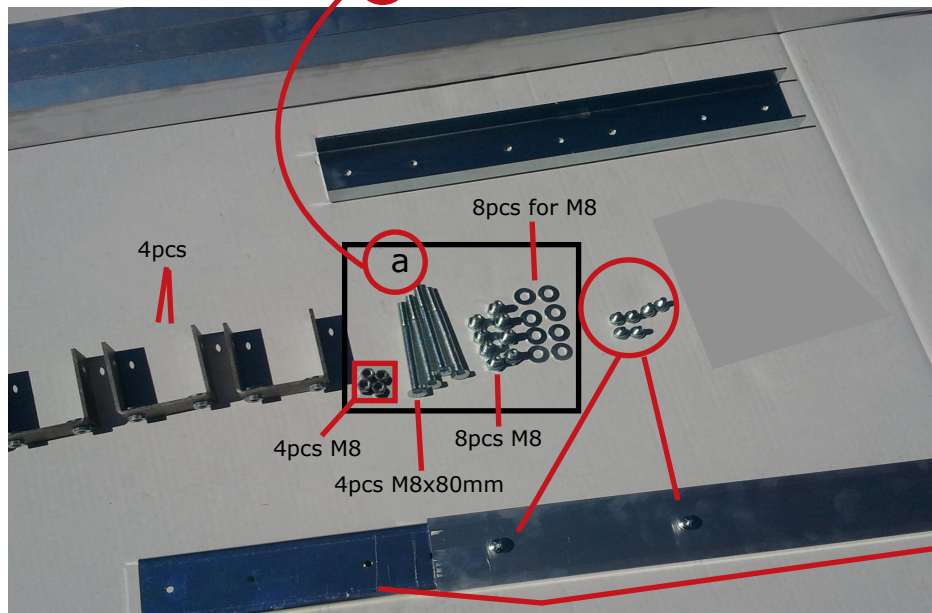
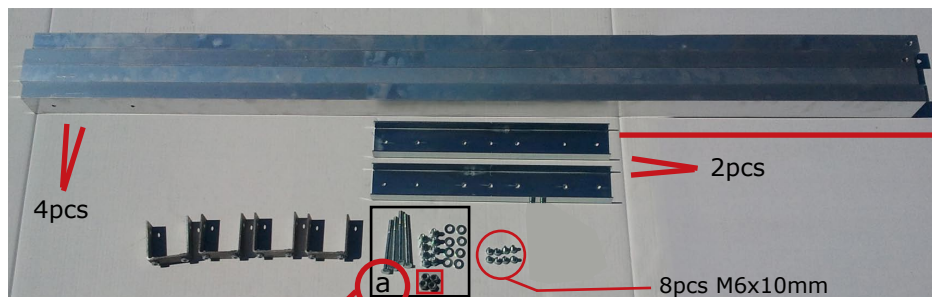




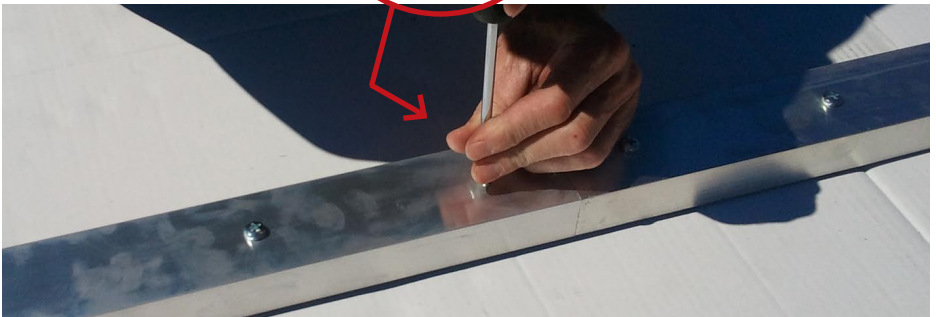
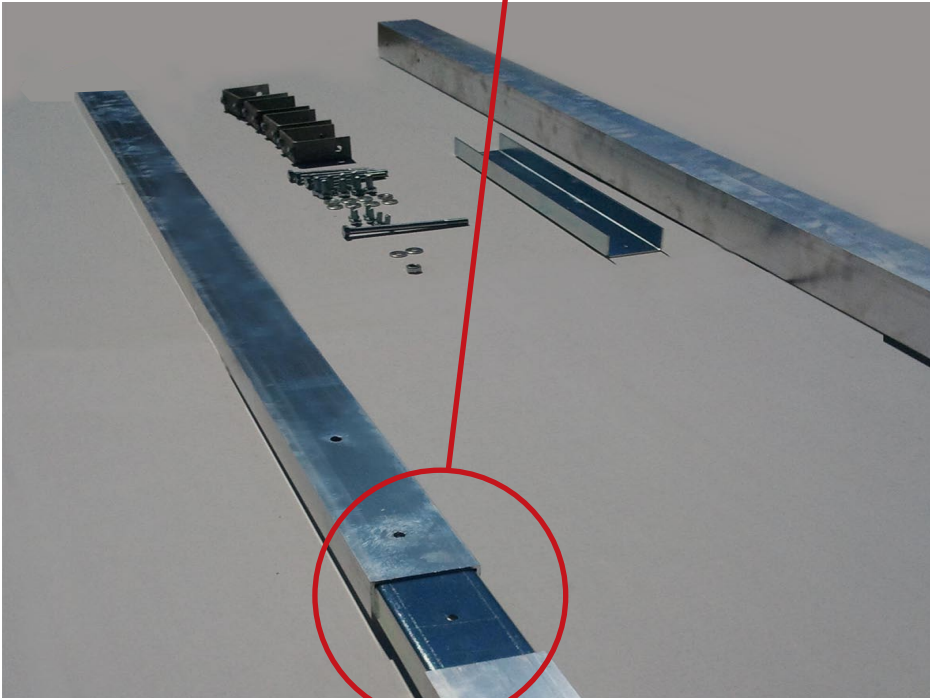
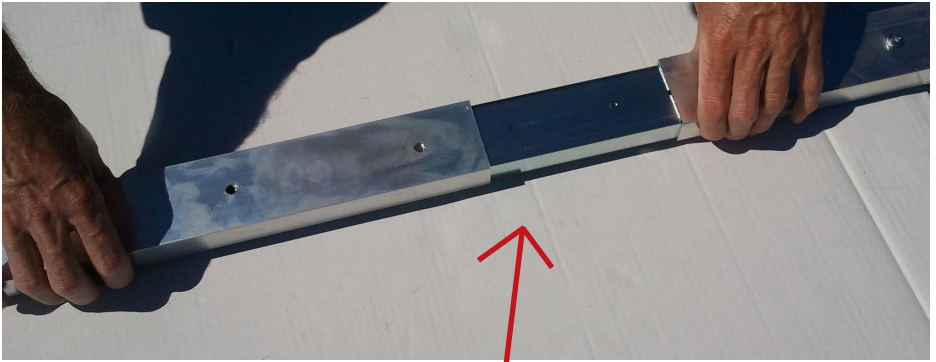


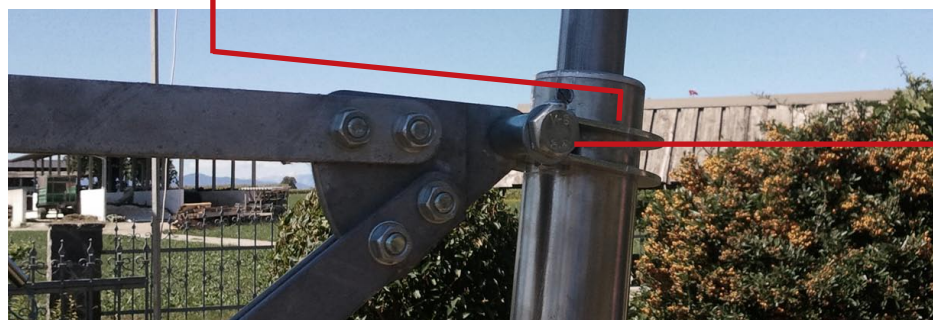
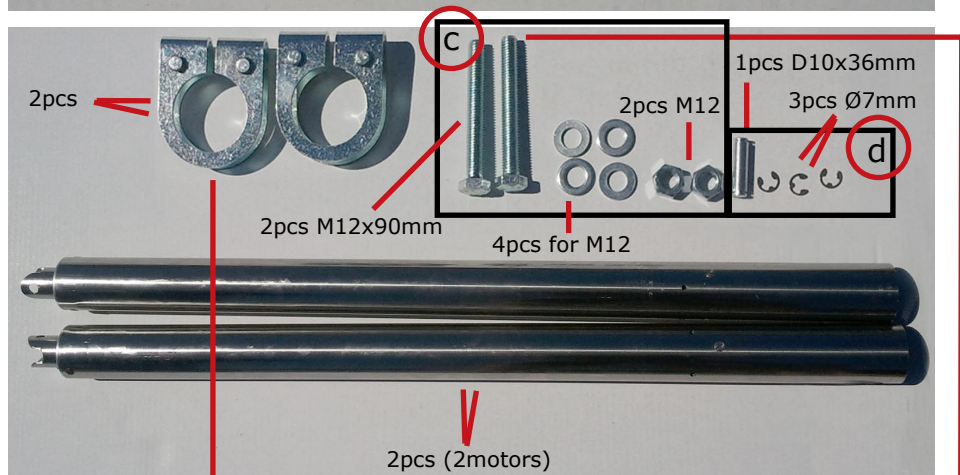
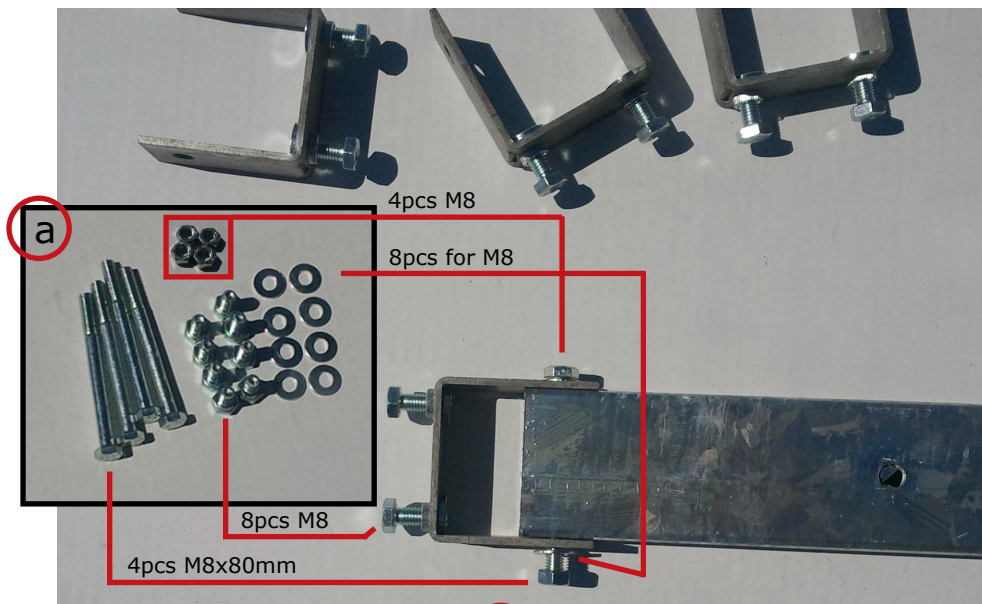
- Make sure that the two arms are perfectly parallel



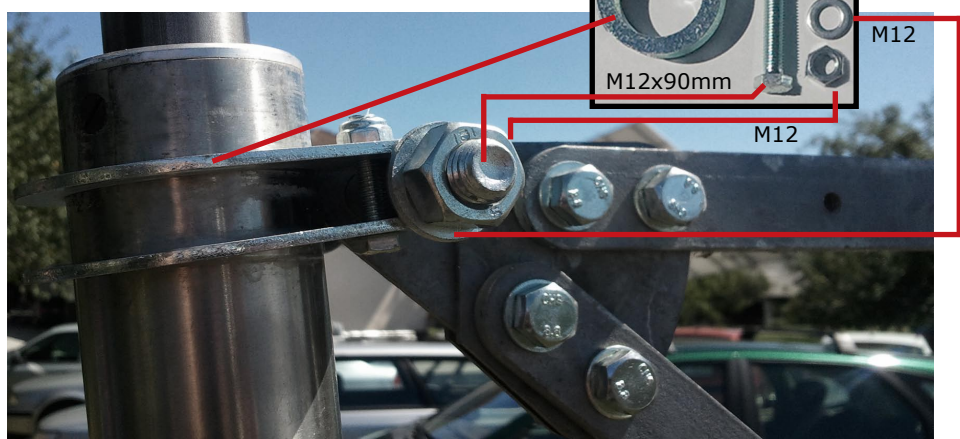


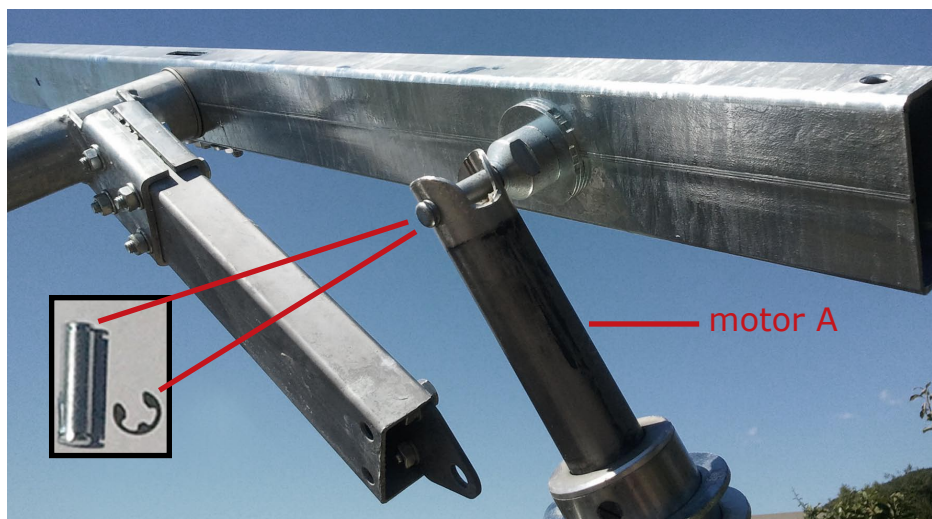
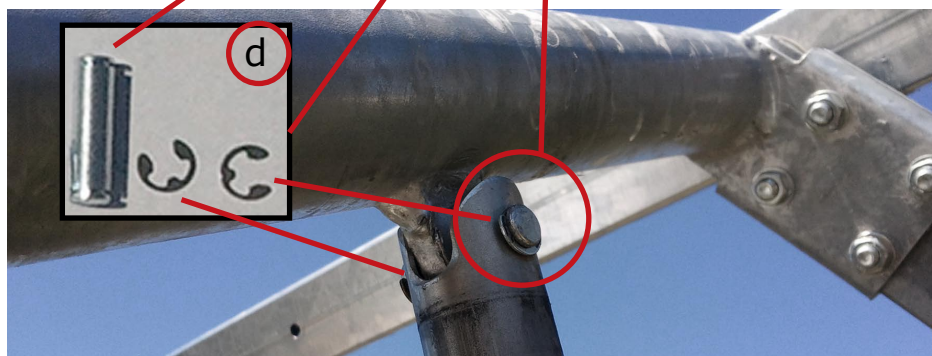




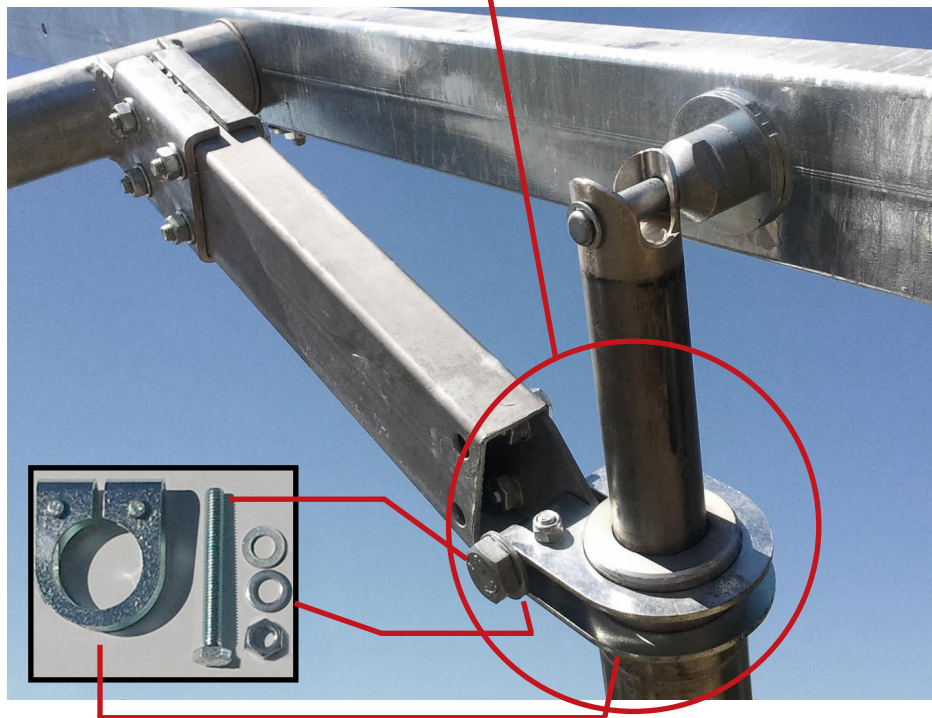
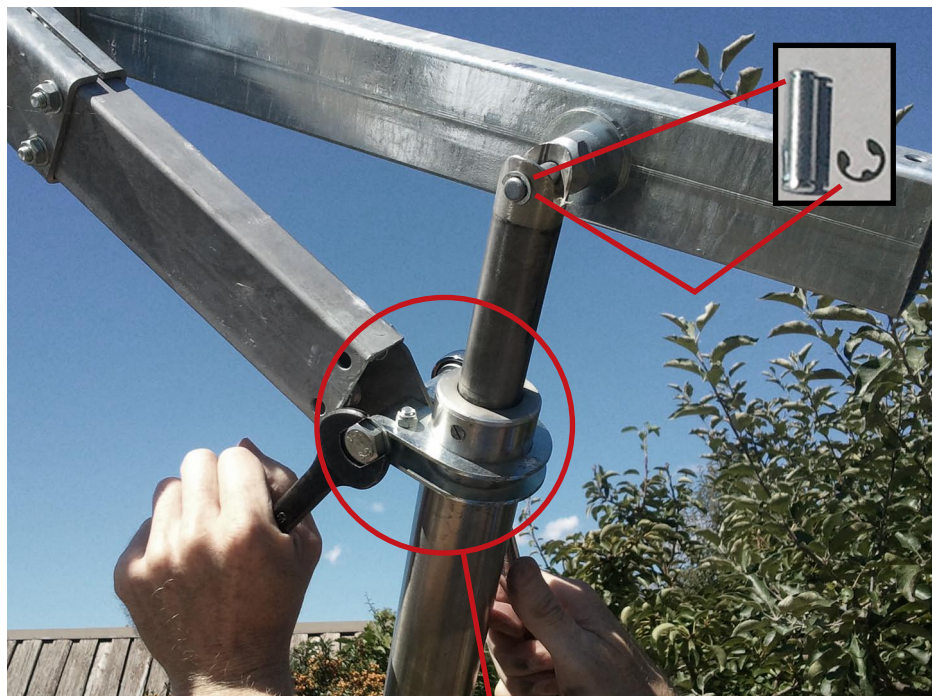


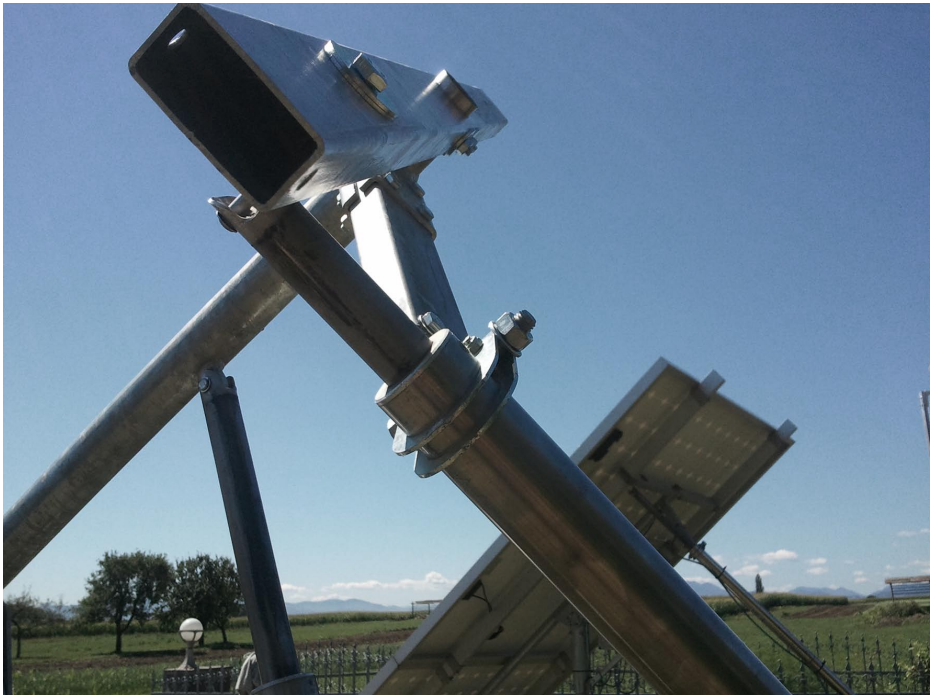
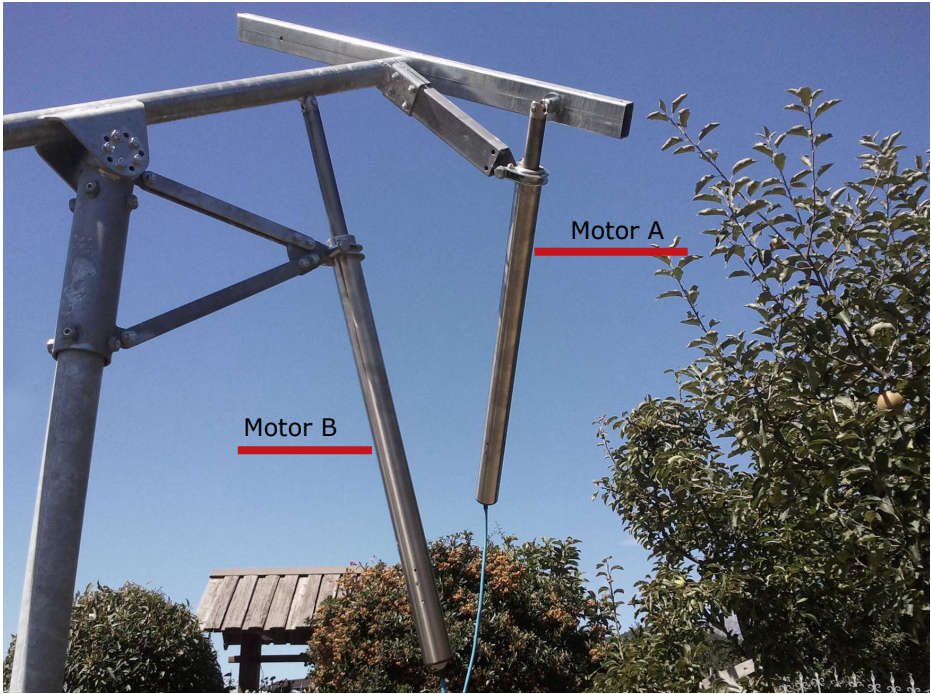










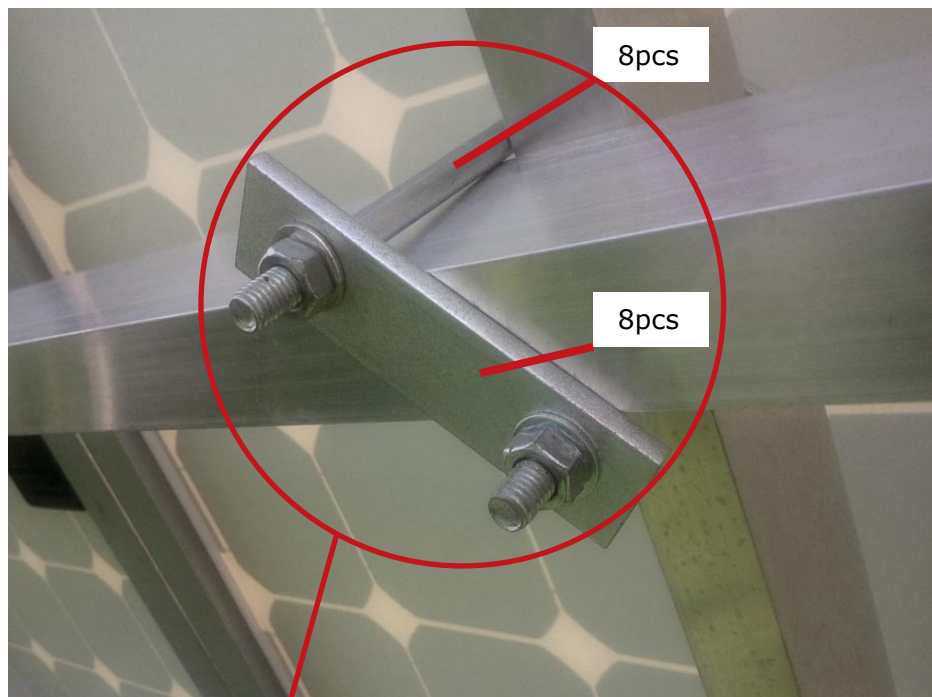






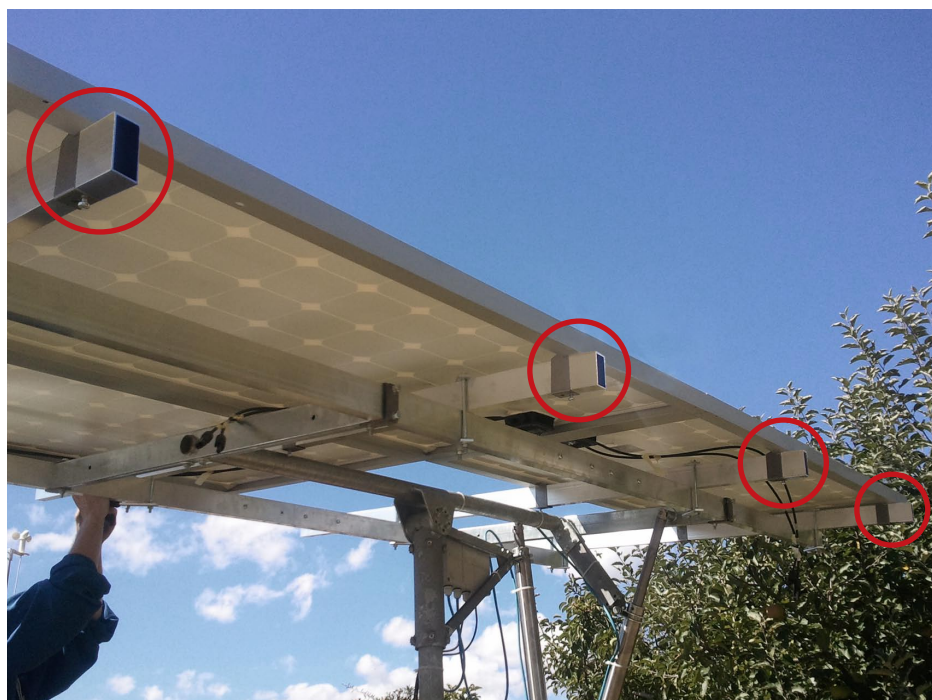
















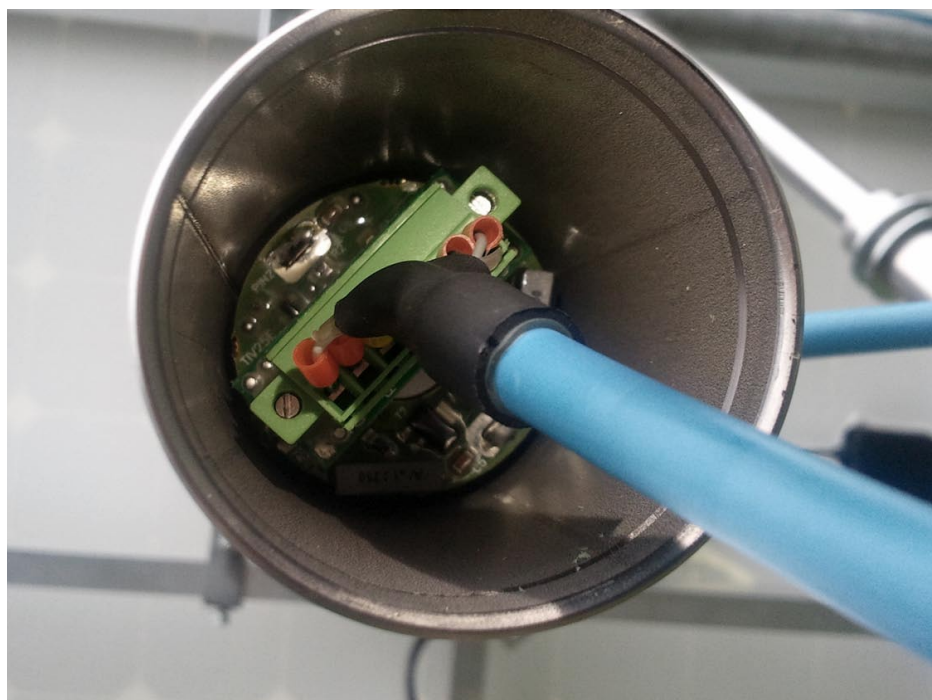


How to set the Motor Box!



2 screws are already inside the connector







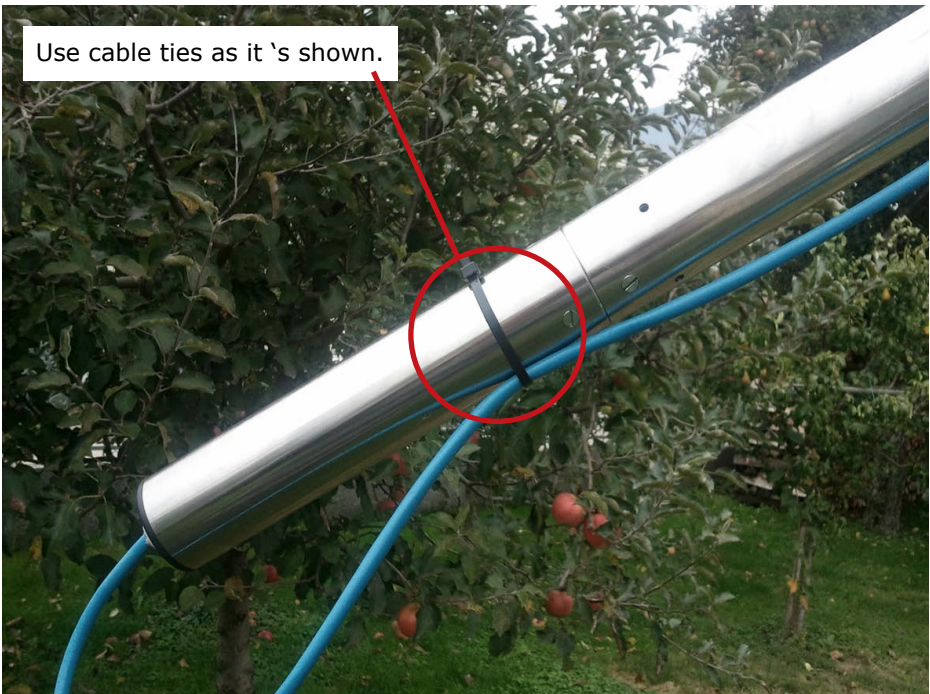
Tight screws like it's shown

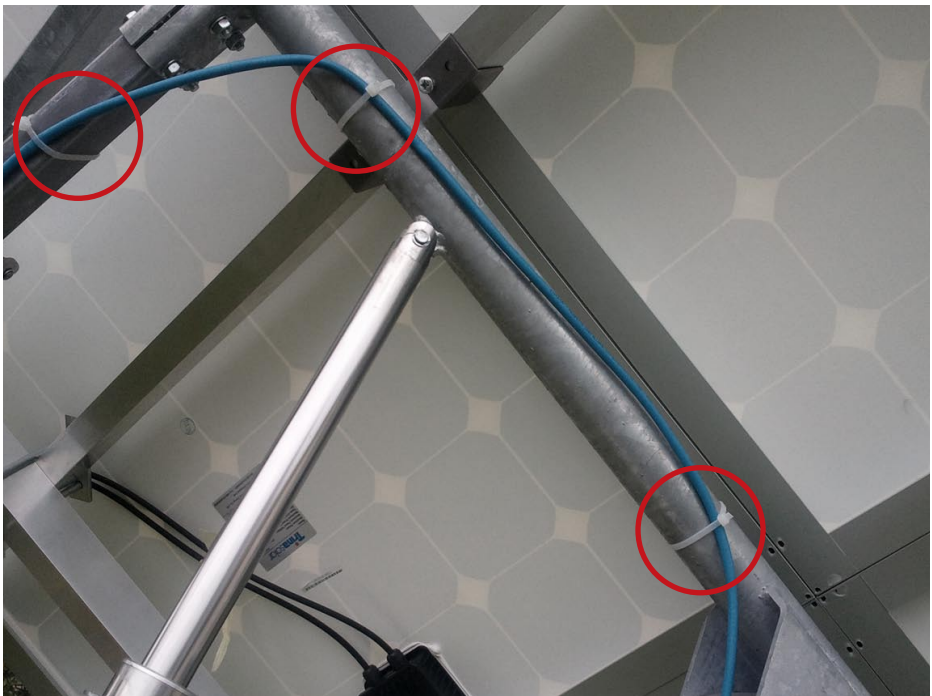
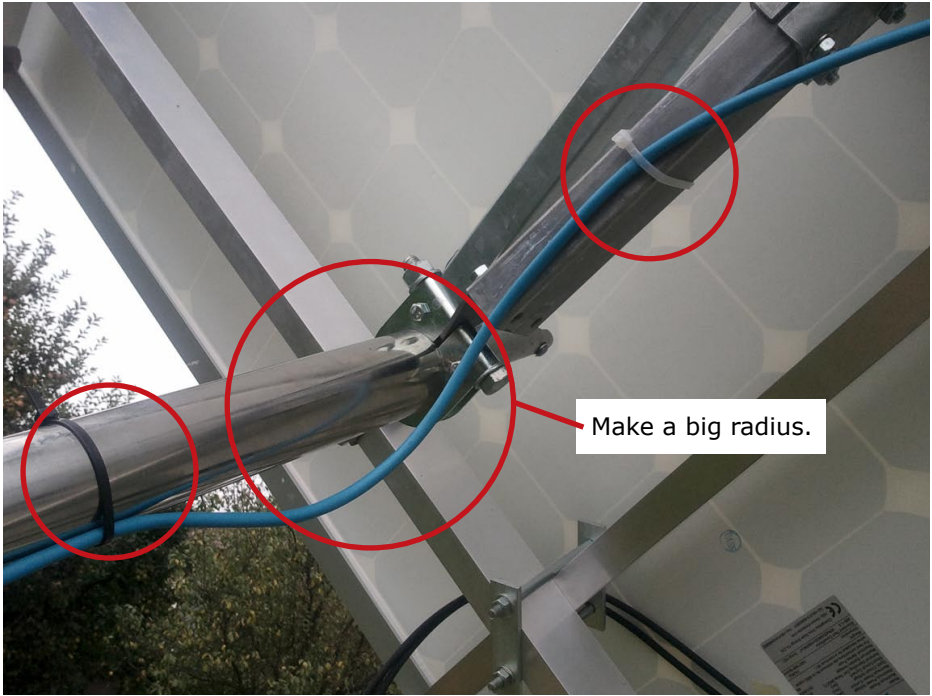






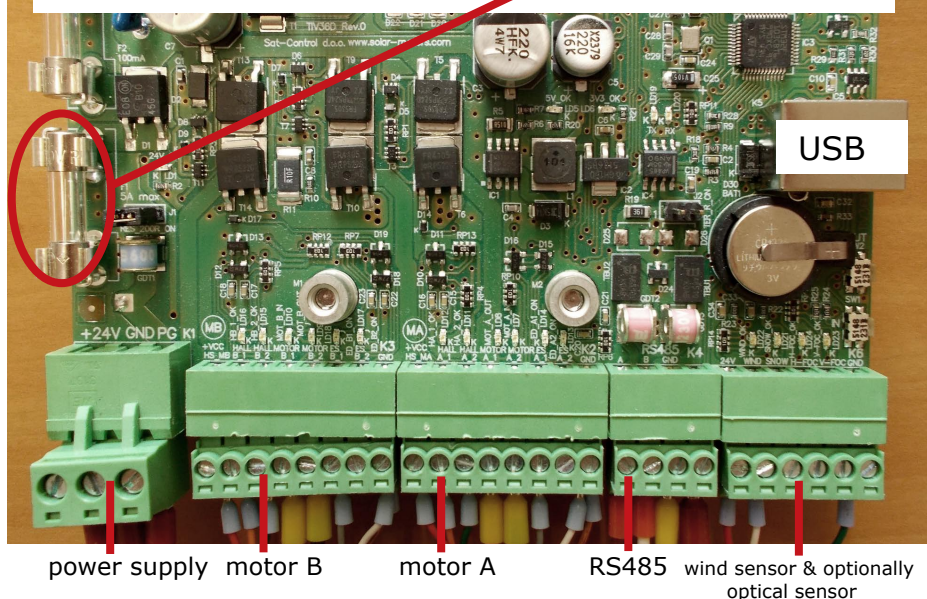
Use cable ties as it 's shown.



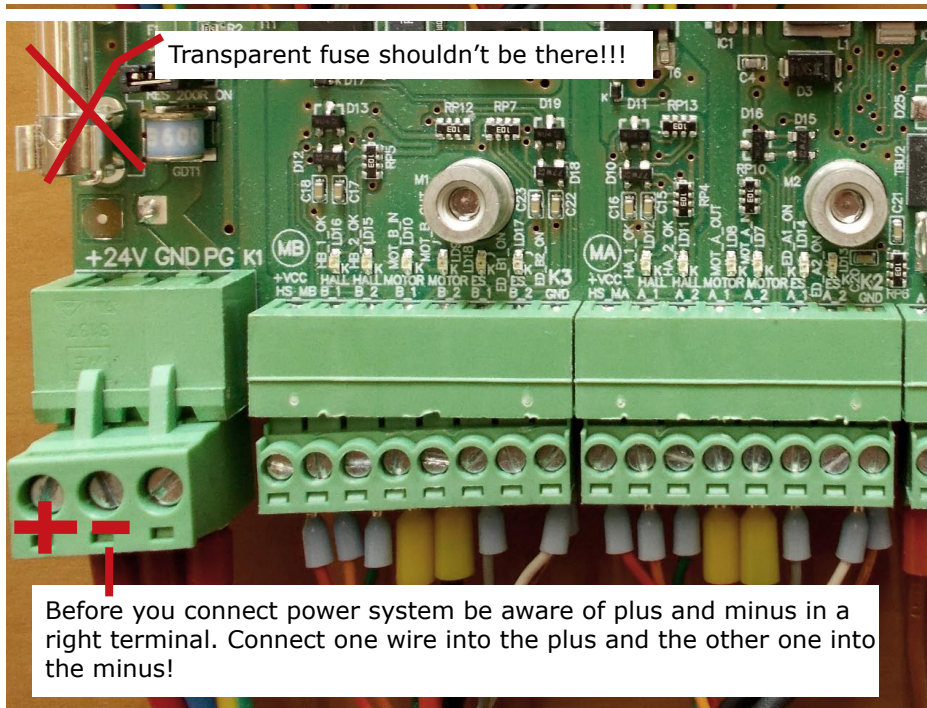


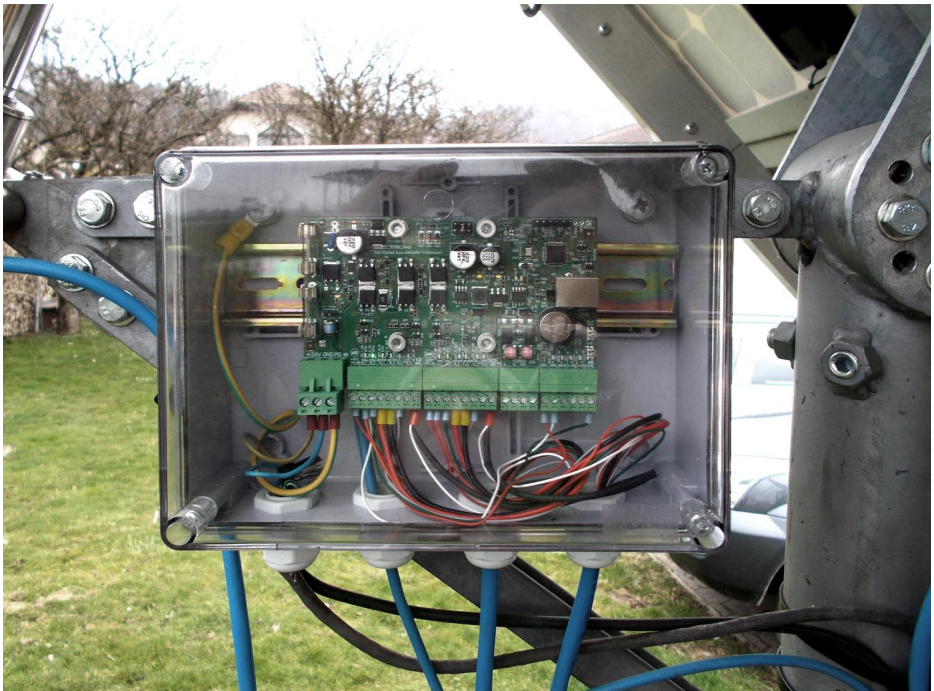
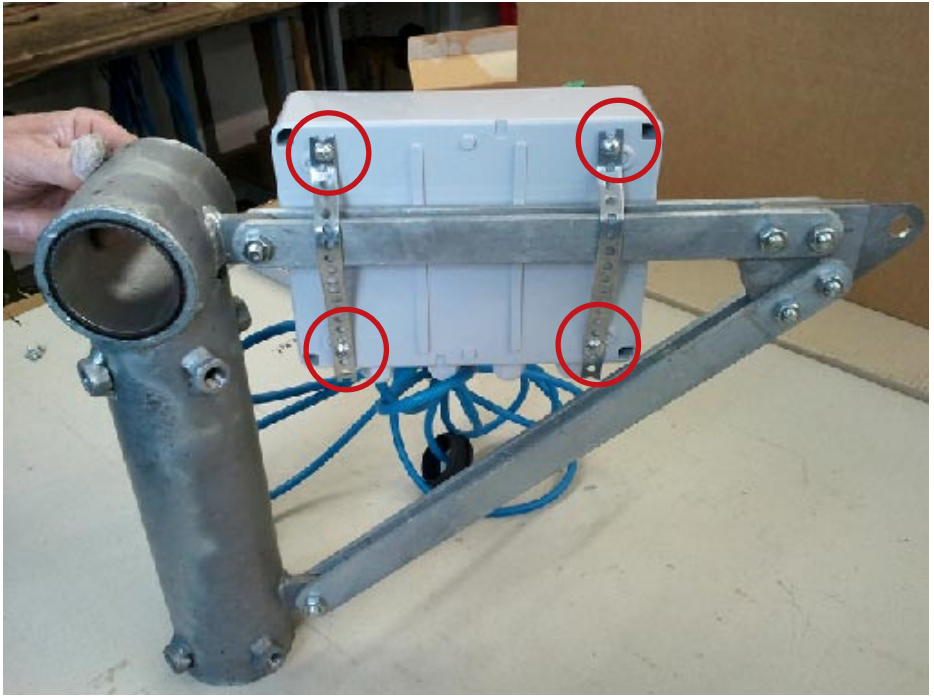


Before wiring junction box, take out the transparent fuse so indicator on connection board turns off.



Transparent fuse shouldn't be there!!!

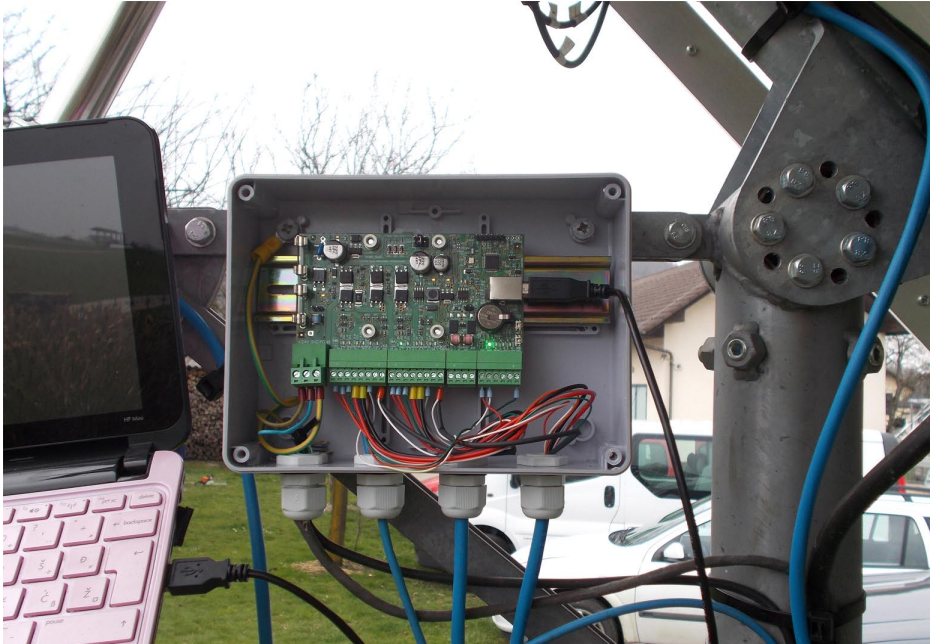






# FIRST CONNECTION OF TRACKER TO A PC OVER AN USB CONNECTION DRIVER INSTALLING

- Connect your PC to the tracker using the enclosed communication cable. Use the USB port on your computer.



- Computer will require its driver installation. Let windows choose your driver automatically. When the driver is not found install latest custom windows updates.



- When the next window appear, click on "No, not this time" and than **Install the software automatically** .